

Exeloo III Automated Public Toilets



EXELOO™

www.exeloo.com

Not an extravagance, but so much more than just a convenience

THE EXELOO VISION

Our vision is to provide a public toilet facility which provides the highest standard of hygiene and safety for users, does not discriminate against the disabled, and discourages loitering or vandalism.



Single unit modified on site with exterior brickwork and roof

FEATURES:

ELECTRONIC BASIN UNIT

The **Exeloo** electronic basin unit provides no touch sensor operation of soap, warm water and hand drying facilities. This unit is also available as a separate item for facilities where hygiene is essential such as restaurants, food processing and medical facilities.

NO TOUCH TOILET FLUSHING

In automated units, toilet flushing is activated automatically when the user washes their hands or when they open the door to leave.

ELECTRONIC TOILET TISSUE DISPENSER

Our unique electronic toilet tissue dispenser accommodates a jumbo toilet roll. This dispenser is key lockable.

MOVEMENT SENSOR

For the safety of users, each automated unit is fitted with a concealed movement sensor.

AUTOMATED SYSTEMS

Automated units include multiple safety systems and a range of functions that can be adjusted to suit specific site requirements. A wide variety of usage information is also provided.

WASH CYCLE

Automated units include a wash cycle which reduces manual cleaning by spraying disinfectant over the toilet pan and floor. This is washed away with water jets. Air dryers then dry the toilet seat and floor in front of the pan.

CONCEALED OPERATING COMPONENTS

All control devices are concealed in the service area of the unit reducing clutter and ensuring that they cannot be damaged.

ELECTROMAGNETIC LOCKING

Units are locked by an exclusive concealed electromagnetic locking device.



Greenwich layout with modified roof and wall panels added on site.



Single unit at boat ramp.



Sensor basin and electronic toilet tissue dispenser

EXELOO TOILET FACILITIES OFFER...

- A safe and friendly environment for users
- Multiple safety systems
- Access and facilities for people with disabilities
- Regular automatic cleaning
- Automatic daily locking and unlocking
- Reduced cleaning and maintenance costs
- Vandal resistant fixtures and surfaces
- Simple installation and easy relocation
- Statistics on usage provided through a digital display

MUSIC AND VOICE MESSAGES

Automated units include a communications module which can provide up to 8 minutes of background music or messages from sponsors. It also gives voice messages to occupiers.

SIGNAGE

Vandal resistant signs show the status of the unit, its features and operating instructions.



St Ives layout with weatherboards and gable roof added on site.

STRUCTURE:

The walls and floor of the **Exeloo III** unit are made out of 75mm steel fibre reinforced precast concrete.

CEILINGS

A moulded fibreglass ceiling provides a smooth stylish appearance.

ROOF

There is a wide range of roof options available for **Exeloo** facilities. These include moulded fibreglass roofs in a pyramid and vaulted style and corrugated aluminium in a gable or heritage style.

INTERIOR WALLS

All interior walls are surfaced with flooring grade ceramic tiles.

EXTERIOR WALLS

The standard exterior surface has a texture and graffiti resistant epoxy paint surface. Other options include decorative mouldings, ceramic tiles, stainless steel or coloured metal sheeting.

FLOORING

All flooring includes non-slip ceramic tiles with moisture resistant grout.

DOORS

All doors are made with a rigid aluminium frame. Surface panels can either be stainless steel or aluminium.

OPTIONS:

While maintaining a very high quality of finish, **Exeloo** can provide a wide range of facilities from low cost economy units, mid range manual units and higher specification automated units. There are many different models and several different roof styles.

BABY CHANGE TABLE

Proprietary baby change tables can be installed if required.

SHARPS DISPOSAL

A discrete stainless steel sharps disposal chute discharging to the service bay is available.



Single unit with columns and seat added.



Three units in Brighton layout



St Ives layout modified on site with terracotta roof and brickwork



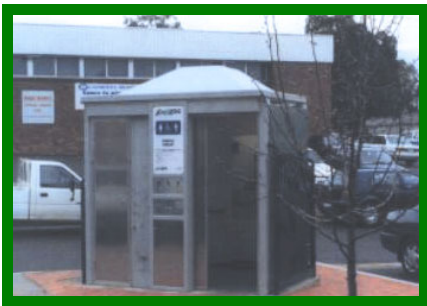
Heritage style units in St Ives layout.



Coin operated units.
Roof modified on site to match surrounding buildings



Single unit built into family picnic booth



Single unit with a Cairo roof and stainless steel doors

SANITARY DISPOSAL

Exeloo has developed a discrete stainless steel chute which allows the contents to be deposited into a concealed fire-retardant plastic bin for easy servicing.

COIN OR CARD OPERATION

Coin or card operation of automated units is available.

APPEARANCE

Many of our purchasers have modified the external appearance to suit their local urban spaces.

BUILT-IN OPTIONS

Complete **Exeloo** units can often be incorporated into existing or new buildings where toilet facilities are required. A ready to assemble version is also available for easy installation.

APPROVALS AND RESEARCH REPORT SUMMARIES:

TECHNICAL OPINION 2000—CSIRO Australia

“The **Exeloo III** Unisex Self Cleaning Toilet manufactured by Exeloo Ltd is suitable for use by both able persons and those with disabilities. “

EFFECTS OF THE EXELOO AUTOMATED CLEANING SYSTEM, University of Auckland

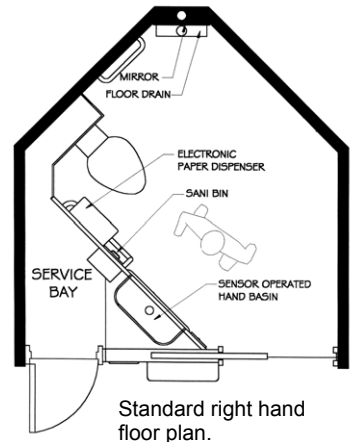
“The **Exeloo** wash cycle was extremely effective and removed 99.9% of the contaminating microorganisms even though they had time to dry on the surface. The results were very consistent and confirmed the effective elimination of microorganisms from contaminated areas within the **Exeloo** unit.”



Card operated unit incorporated into service station building



Two units incorporated into new life saving club



Worldwide Exeloo Distributors:

NEW ZEALAND

Exeloo Ltd
PO Box 33-256, Takapuna
26 Paramount Drive, Henderson
AUCKLAND
TEL: 64-9-838 8912
FAX: 64-9-838 8913
email: info@exeloo.com
website: www.exeloo.com

USA-CST & EST TIME ZONES

Exeloo East
2596 South Cobb Drive
Smyrna GA 30080
TEL/FAX: 1-770-436 0699
email: louis@exelooeast.com
doug@exelooeast.com
website: www.exelooeast.com

AUSTRALIA-VIC,ACT,SA, WA & TAS

WC Convenience Man Pty Ltd
Unit 20 / 260 Wickham Rd
Moorabbin VIC 3189
TEL: 61-3-9555 3533
FAX: 61-3-9555 3422
email: wccman@ozemail.com.au

USA-MST & PST TIME ZONES

Exeloo West
Tel: 1-877-409 6802
email: damien@exelooeastern.com

AUSTRALIA-NSW & NT

Exeloo RBA Pty Ltd
PO Box 30 Oatley NSW 2223
TEL: 61-2-9570 8888
FAX: 61-2-9570 9268
email: exeloo@rbagroup.com.au
website: www.rbagroup.com.au/exeloo

CANADA

CANZ Traders
email: grantsmith@exeloo.com

AUSTRALIA-QLD

Exeloo RBA Pty Ltd
P O Box 625
Springwood QLD 4122
TEL: 61-7-3387 7709
FAX: 61-7-3808 4738
email: exeloo@rbagroup.com.au
website: www.rbagroup.com.au/exeloo

SINGAPORE

Marathon Equip Asia Pte Ltd
12 Tuas Avenue 1 Singapore 639497
TEL: 65-6861 8141
FAX: 65-6863 3310
email: sanderson@marathonasia.com